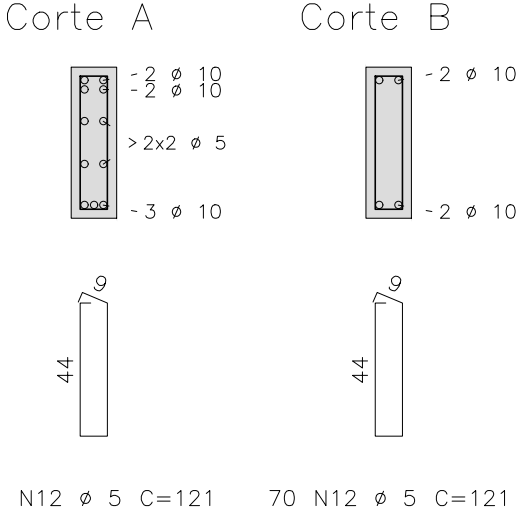
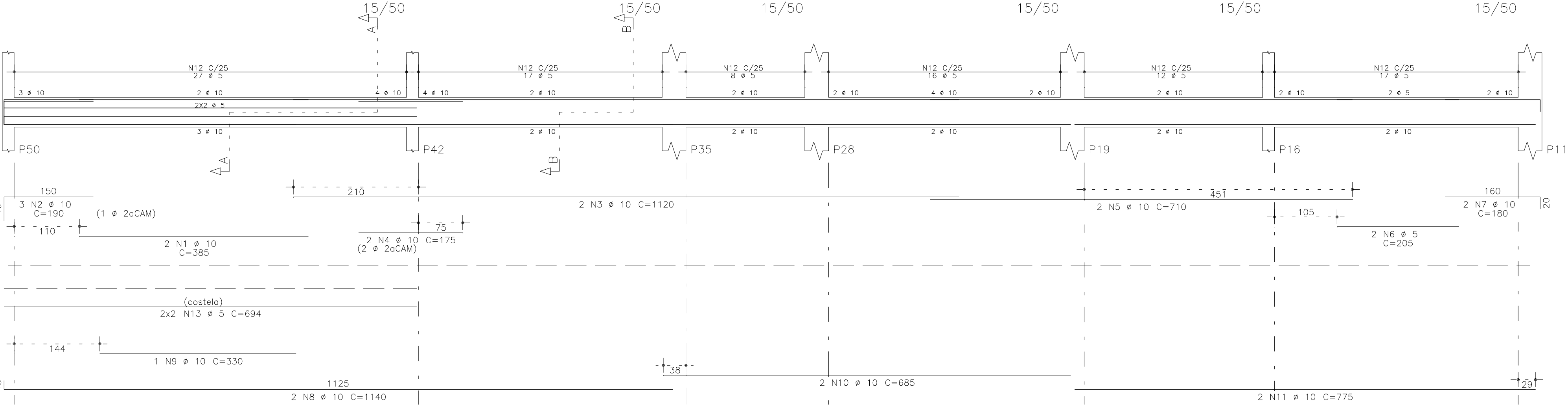


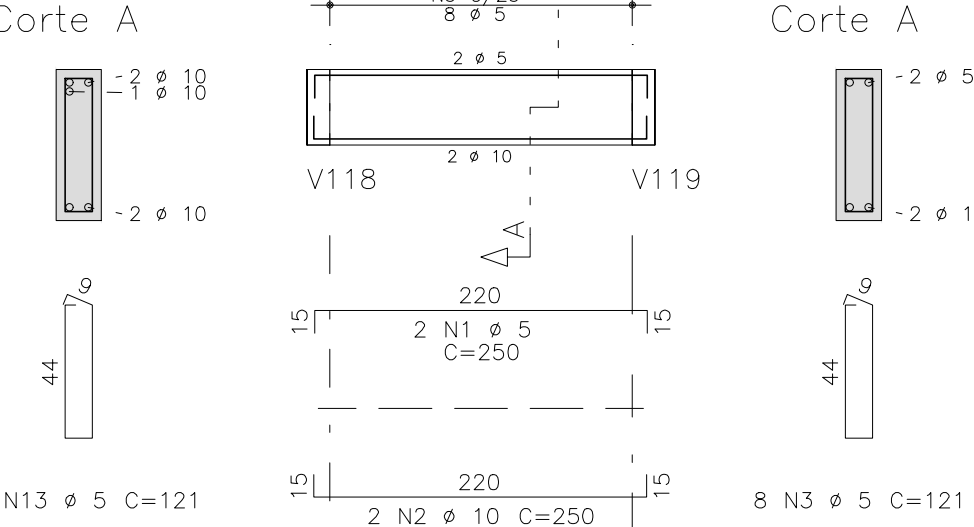
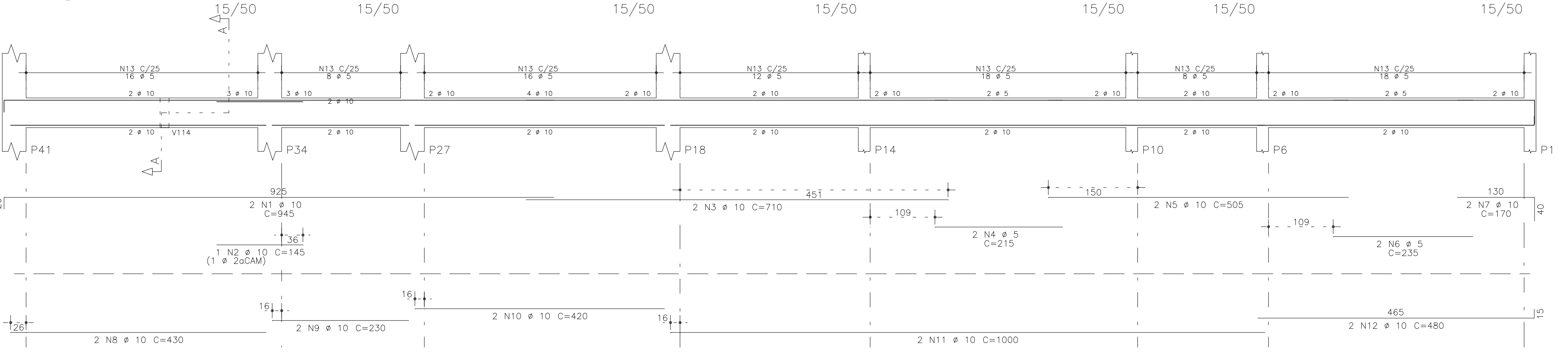
V122



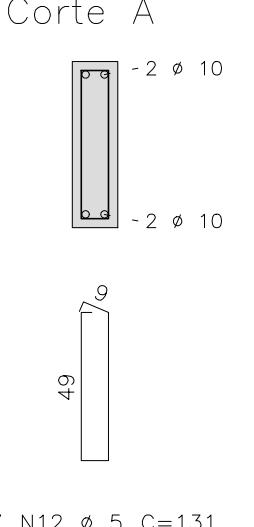
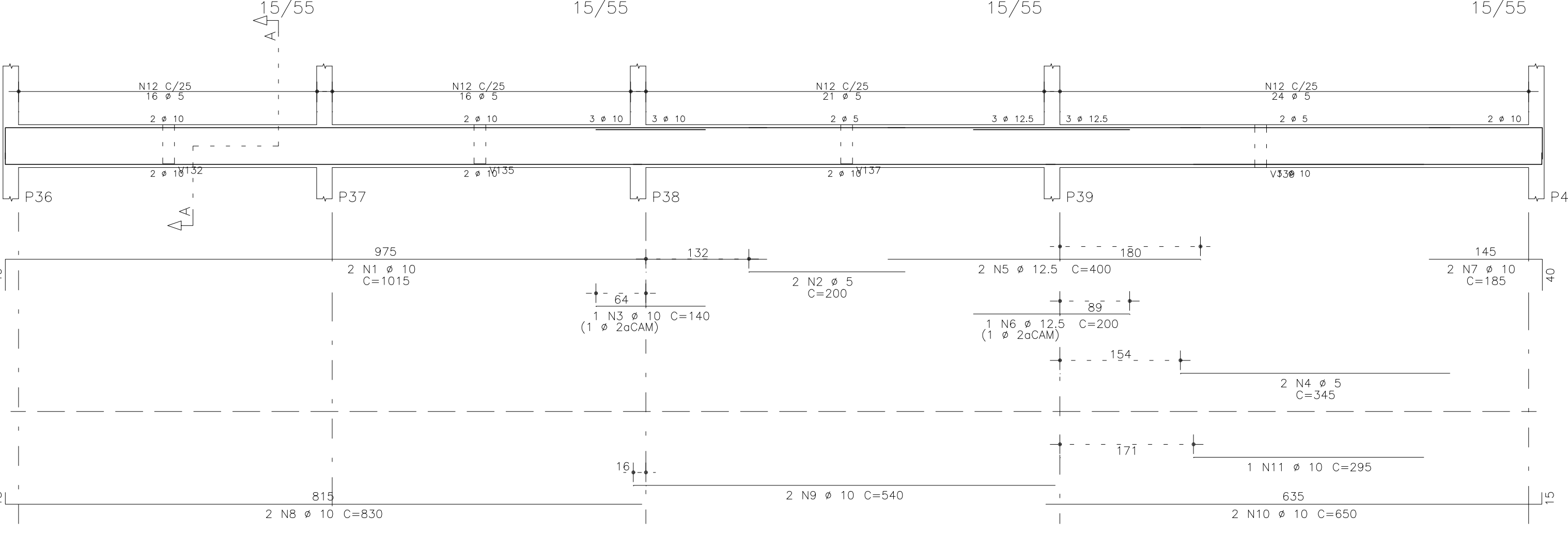
AÇO	POS	BIT (mm)	QUANT	COMPRIMENTO	
				UNIT (cm)	TOTAL (cm)
V101	60B	1	5	2	245
	50A	2	10	3	200
	50A	3	10	2	990
	50A	4	10	1	140
	50A	5	10	2	935
	50A	6	10	2	405
V102	60B	7	5	51	121
	60B	1	5	4	280
	50A	2	12,5	2	330
	50A	3	10	2	845
V112	60B	4	5	32	121
	50A	1	10	2	1015
	60B	2	5	2	200
	50A	3	10	1	140
	60B	4	5	2	345
	50A	5	12,5	2	400
	50A	6	12,5	1	200
	50A	7	10	2	185
	50A	8	10	2	830
	50A	9	10	2	540
	50A	10	10	2	650
	50A	11	10	2	295
V114	60B	12	5	77	131
	60B	1	5	2	250
	60B	3	5	8	121
V118	50A	1	10	2	945
	50A	2	10	1	145
	50A	3	10	2	710
	60B	4	5	2	215
	50A	5	10	2	505
	60B	6	5	2	235
	50A	7	10	2	170
	50A	8	10	2	430
	50A	9	10	2	230
	50A	10	10	2	420
	50A	11	10	2	1000
	50A	12	10	2	480
V122	60B	13	5	96	121
	50A	1	10	2	385
	50A	2	10	3	190
	50A	3	10	2	1120
	50A	4	10	2	175
	50A	5	10	2	710
V136	60B	6	5	2	205
	50A	7	10	2	180
	50A	8	10	2	1140
	50A	9	10	1	330
	50A	10	10	2	685
	50A	11	10	2	775
	60B	12	5	97	121
	60B	13	5	4	694
	50A	1	10	2	945
	50A	2	10	1	145
	50A	3	10	2	275
	50A	4	10	2	430
V136	50A	5	10	2	675
	60B	6	5	40	121
	50A	1	10	2	945
	50A	2	10	1	145

RESUMO AÇO CA 50-60			
AÇO	BIT (mm)	COMPR (m)	PESO (kg)
60B	5	566	87
50A	10	404	249
50A	12,5	17	16
Peso Total 60B =			87 kg
Peso Total 50A =			265 kg

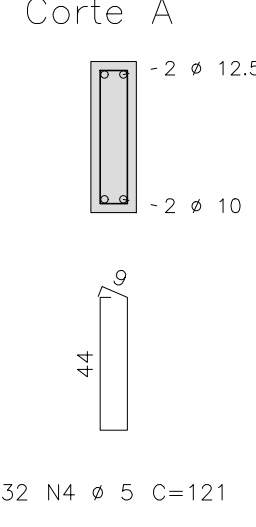
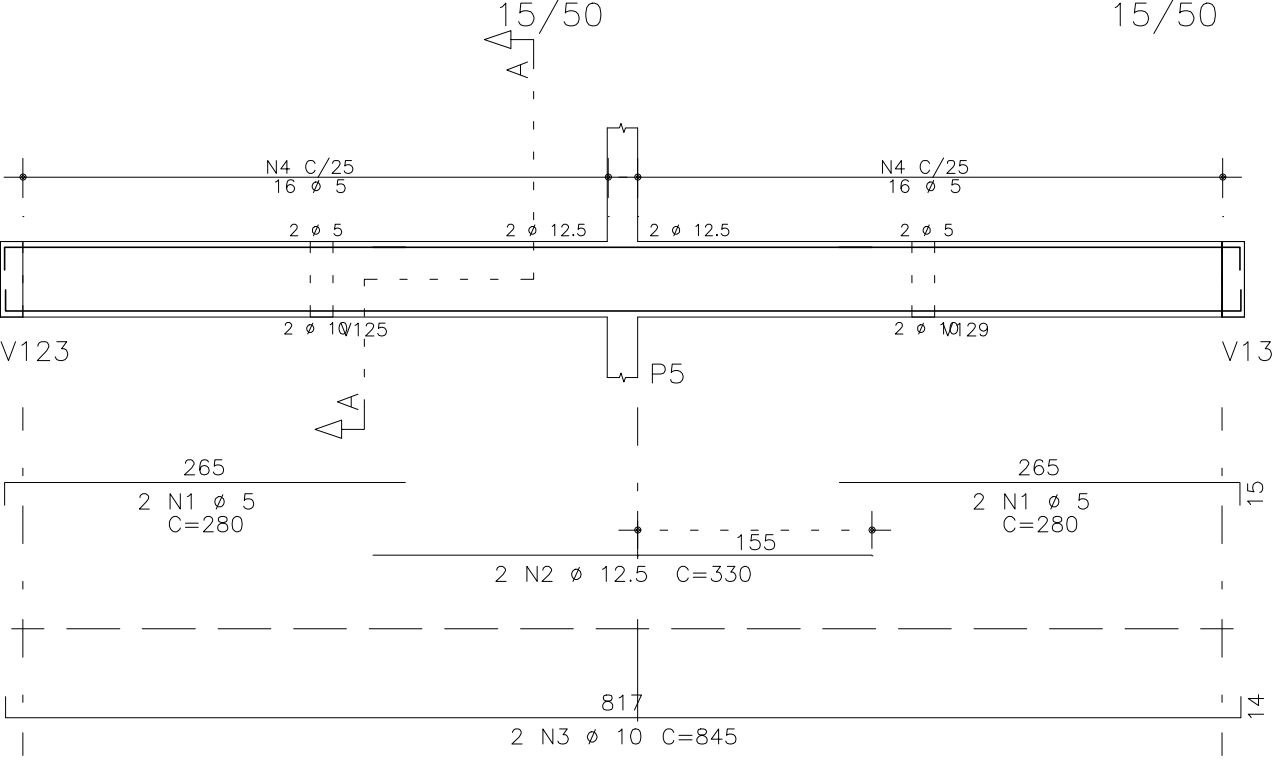
V118



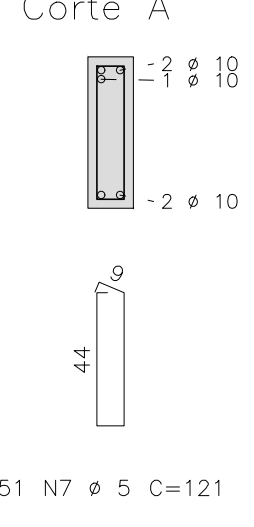
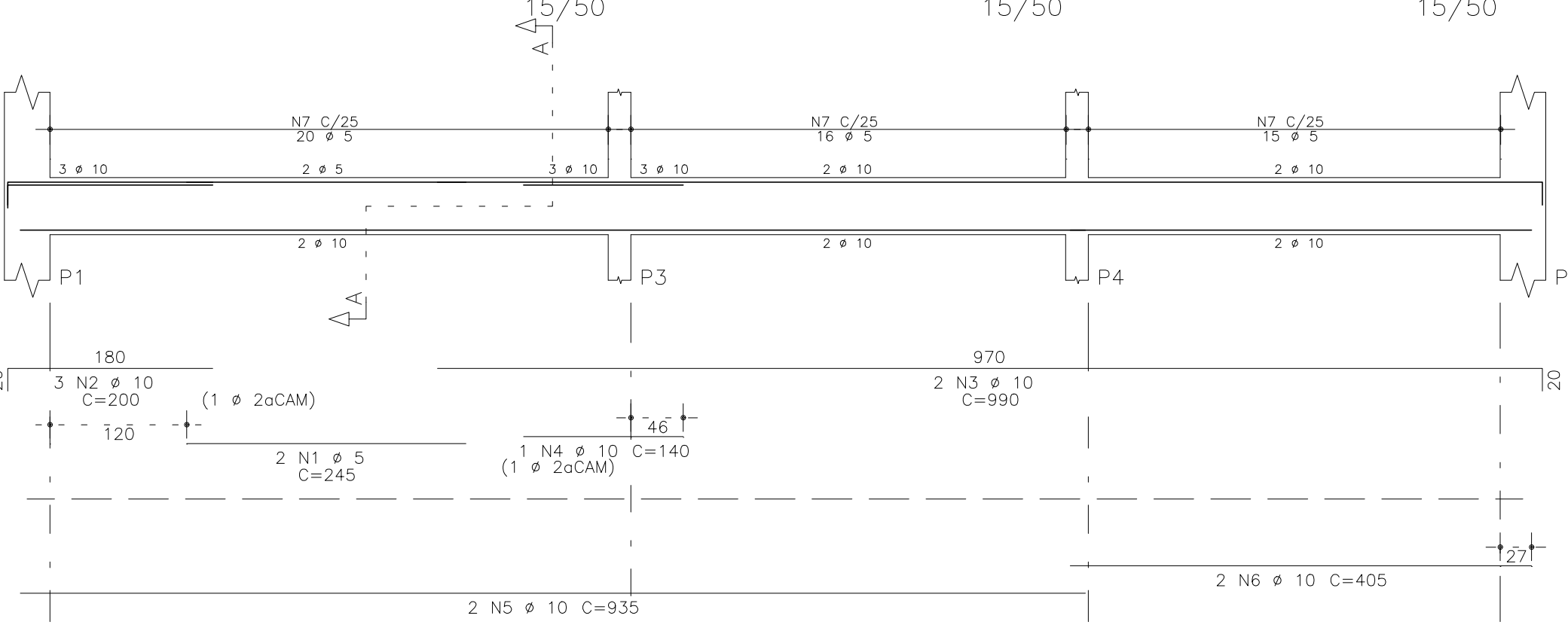
V112



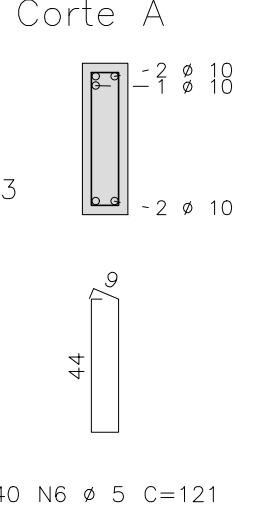
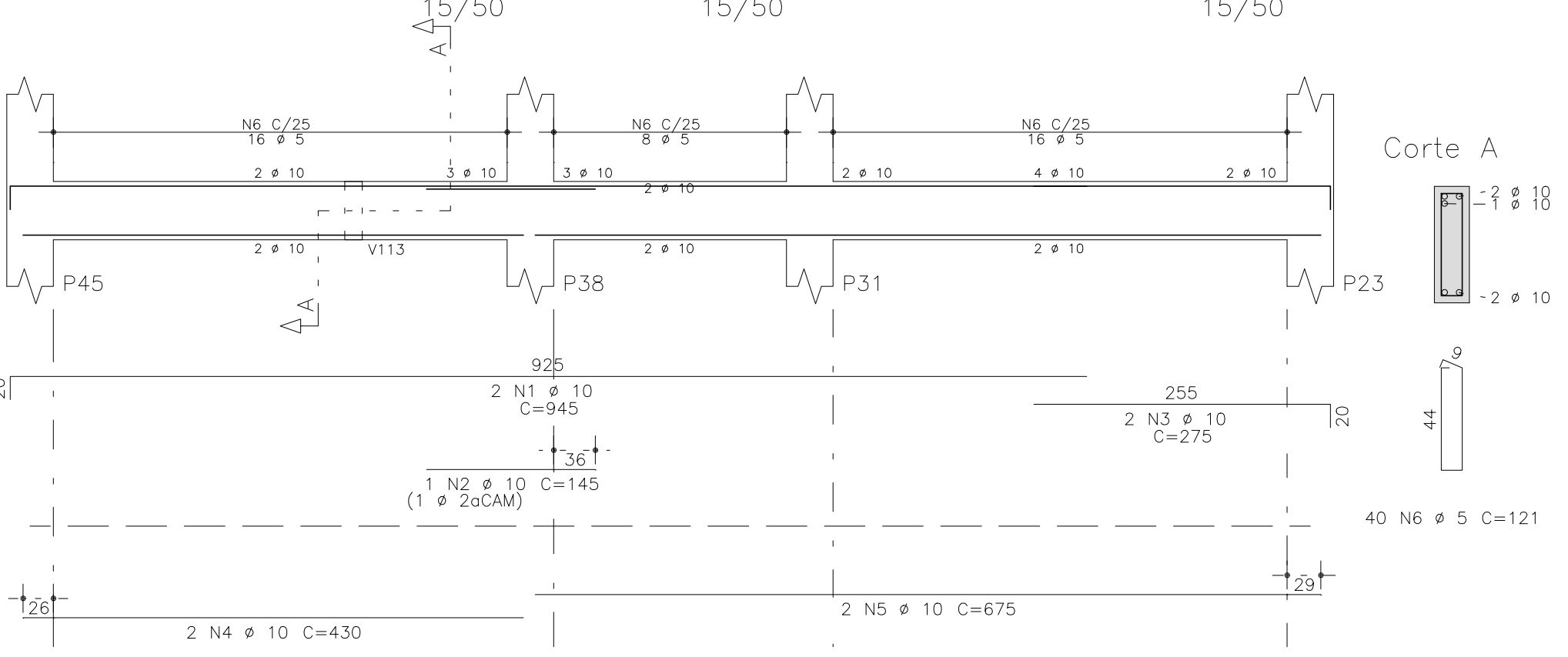
V102



V101



V136



O acesso ao Modelo Estrutural em dimensão pode ser executado pelo QR CODE ao lado, podendo acessar via celulares, tablets e quaisquer outros dispositivos.

Schuring & Schuring

Schuring & Schuring Ltda.
Escritório Técnico B.E.SCHURING – Projetos de Engenharia
Av. XV de Novembro, 489 – Porto Zo. Andar – Cuiabá MT
Fone:(065) 321 9959 – Fax:(065) 623 5066 – Email – schuring@terra.com.br

PROJETO: PROPRIETÁRIO: PREFEITURA MUNICIPAL VARZEA GRANDE MT

RESP. TEC. EXECUÇÃO:

OBRA: PREFEITURA MUNICIPAL DE VARZEA GRANDE MT

Unid. Básica de Saúde UBS–MATILDE CURVO DE MORAES

END.: Av. dos Bandeirantes.

Conj. Habit. José Carlos Guimarães, Varzea Grande–MT

AUTORES DO PROJETO: **Benedito Eliseu Schuring** Eng. Civil CREA 715/D–MT

Andre Luiz Schuring Eng. Civil CREA 8697/D–MT

ASSUNTO: **BALDRAME DET ARM VIGA**

PECAS DETALHADAS

V101 / V102 / V112 / V114 / V118 / V122 V136

FOK: _____

ESCALA: 1:50

ARQUIVO: _____

DIREITOS AUTORES RESERVADOS VERIFICAR MEDIDAS NA OBRA

DATA: 15/07/2019

FOLHA No. 15